

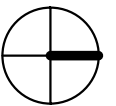
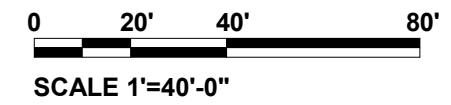
NEW
CONSTRUCTION

SITE

18TH ST NW

CONNECTICUT AVE NW

MASSACHUSETTS AVE NW



1322-1326 18TH STREET

1322 18th ST NW, Washington, DC 20036

SITE PLAN A.04

COPYRIGHT © 2020 PGN ARCHITECTS, PLLC

12/19/2022



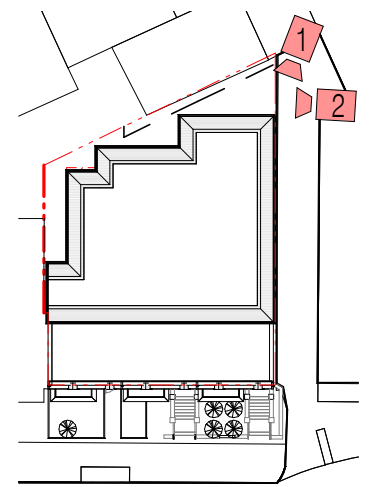
Board of Zoning Adjustment
District of Columbia
CASE NO.20841
EXHIBIT NO.15B



1.



2.



KEYPLAN

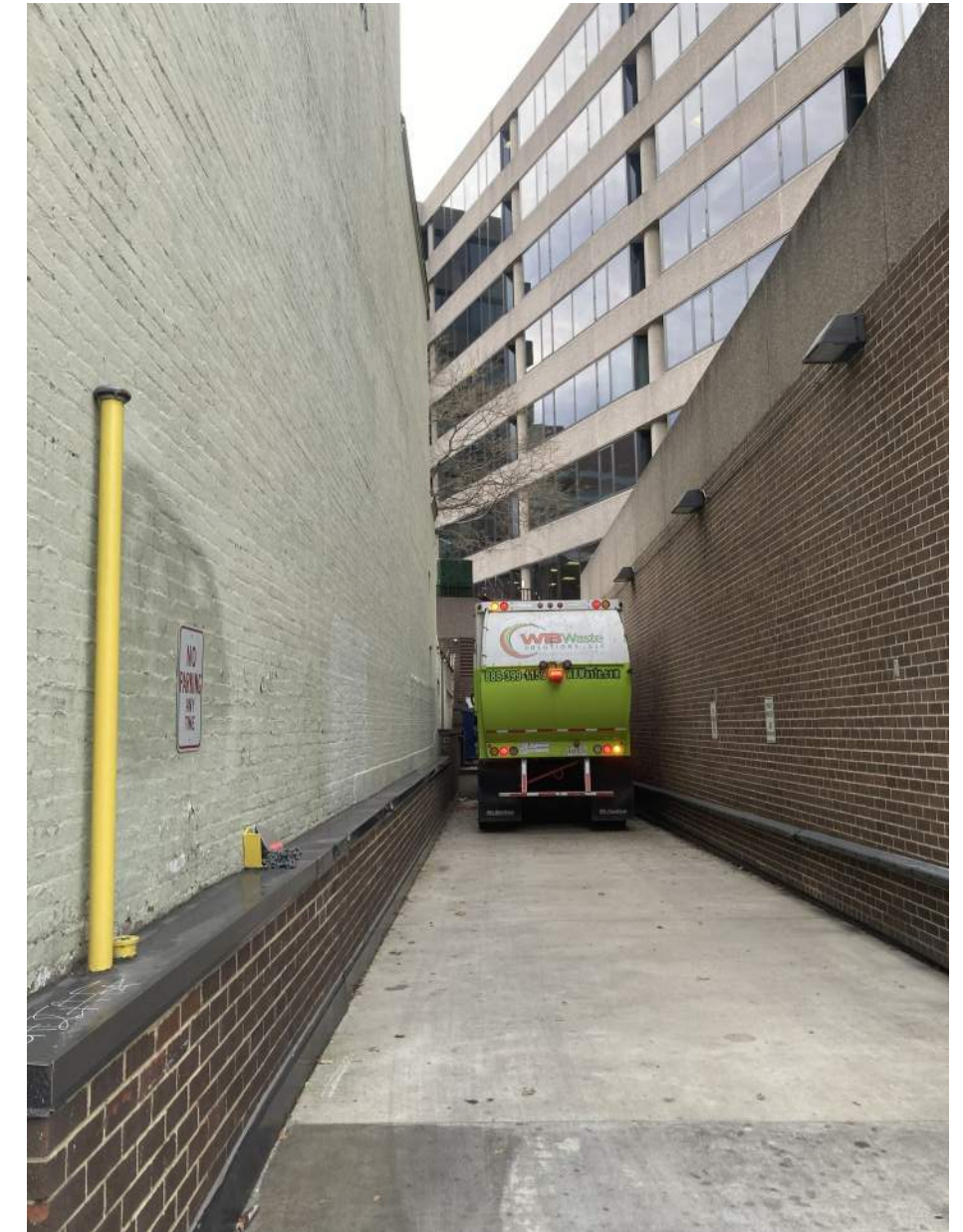


1.

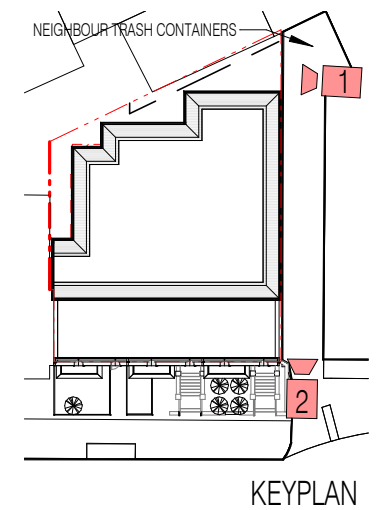
1322-1326 18TH STREET

COPYRIGHT © 2020 PGN ARCHITECTS, PLLC

1322 18th ST NW, Washington, DC 20036



2.



KEYPLAN

REAR YARD PHOTOS | A.10

12/19/2022





1322-1326 18TH STREET

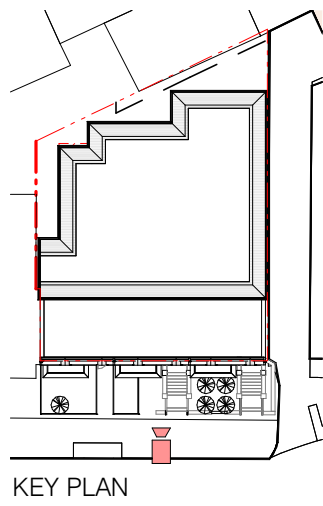
1322 18th ST NW, Washington, DC 20036

FIRST FLOOR PLAN | A.11

COPYRIGHT © 2020 PGN ARCHITECTS, PLLC

12/19/2022





1322-1326 18TH STREET

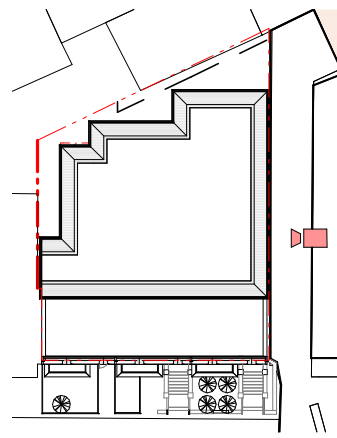
1322 18th ST NW, Washington, DC 20036

SOUTH ELEVATION A.20

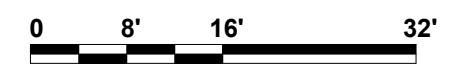
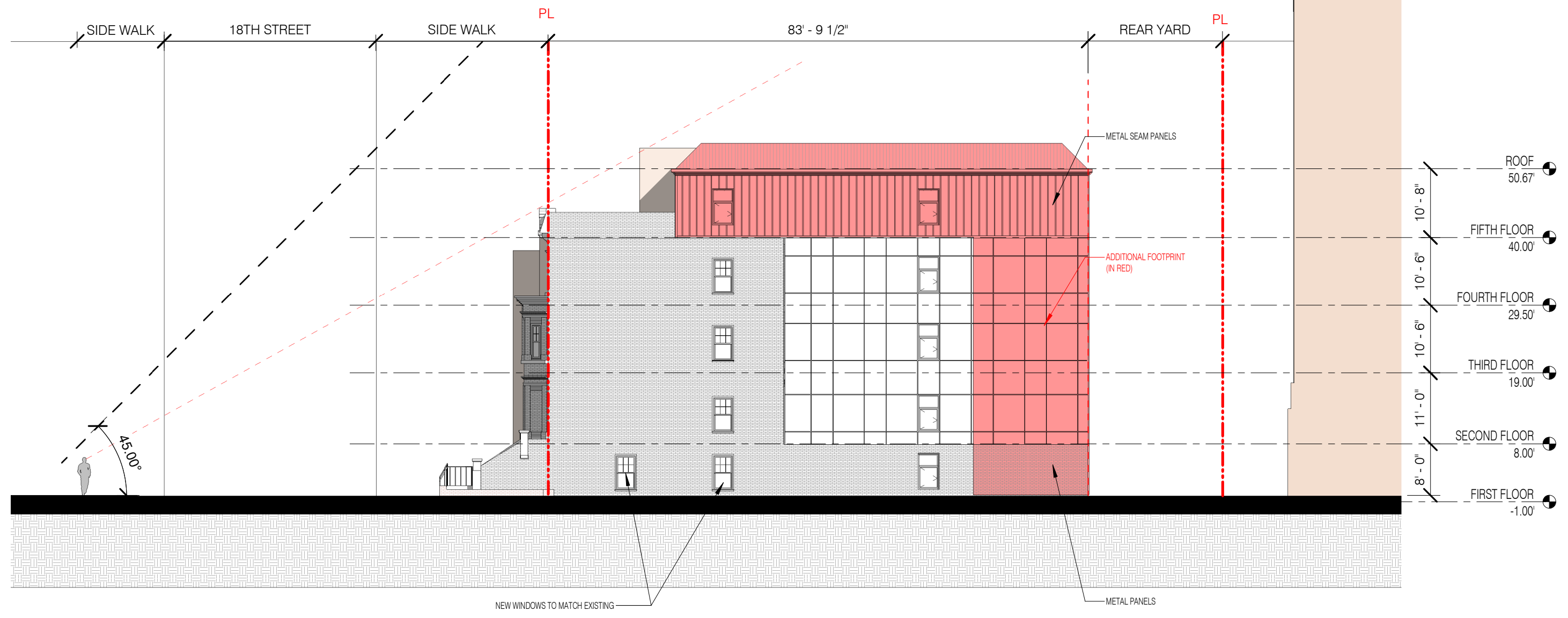
COPYRIGHT © 2020 PGN ARCHITECTS, PLLC

12/19/2022





KEY PLAN



SCALE 1/16"=1'-0"

1322-1326 18TH STREET

1322 18th ST NW, Washington, DC 20036

EAST ELEVATION A.21

12/19/2022

COPYRIGHT © 2020 PGN ARCHITECTS, PLLC

